




# THE WESTERN® ACTIVITY BUG BOOK

## WHY DOES WESTERN TEACH ABOUT BUGS?

-  Insects can be good for the environment.
-  Some insects help us, some bugs hurt us, and some bugs can be dangerous – it's important to learn about what is inside and outside of your home.
-  To learn more about insects, visit:

[westernpest.com](http://westernpest.com)

  
Consider it Done.®

  
**WESTERN**  
PEST SERVICES

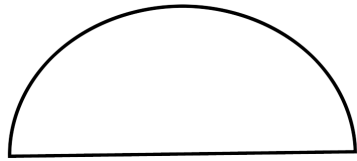
# THE WESTERN® ACTIVITY BUG BOOK

**THE WESTERN  
ACTIVITY BUG BOOK**  
is a fun way for children  
to learn. It's filled with games  
to play and they all help children  
learn about pests that may  
invade homes. Plus, there is  
a section for you to create  
your own bugs.

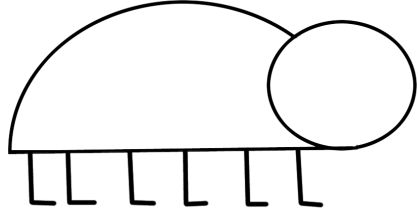
Use this activity  
book to go on a  
backyard safari  
and discover some  
interesting insects  
that live in your  
environment!

# Draw a Ladybug

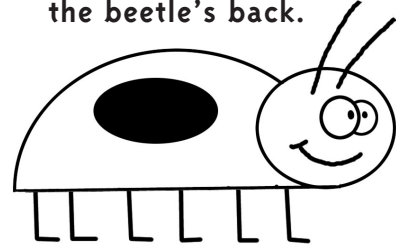
**STEP 1** Draw the letter "D" on its side.



**STEP 2** Next, draw a circle. Draw the letter "L" six times for legs.

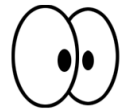


**STEP 3** Draw lines for antennae. Draw circles for eyes, and add big black spots on the beetle's back.

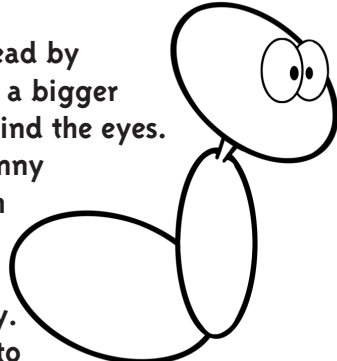


# Draw an Ant

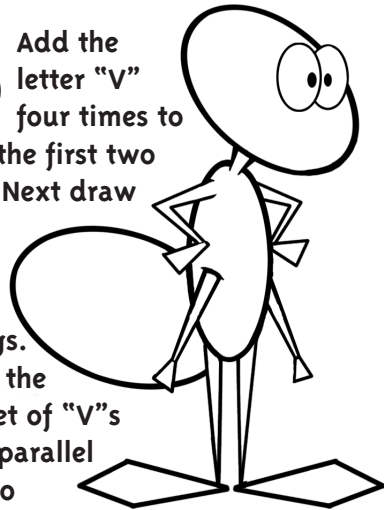
**STEP 1** Draw two ovals for eyes. Place a dot inside each oval.



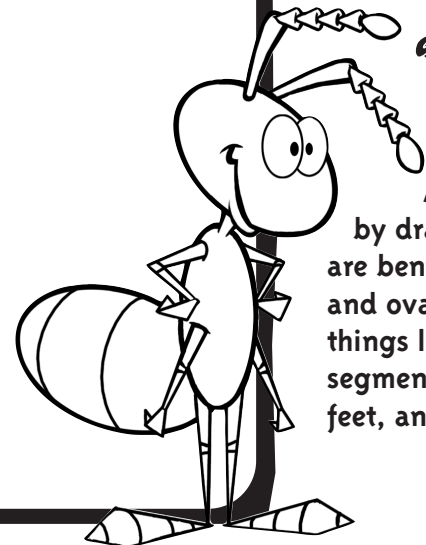
**STEP 2** Add a head by drawing a bigger oval behind the eyes. Draw a long skinny oval underneath the head. Draw a bigger oval behind the body. Draw two lines to connect the head and body.



**STEP 3** Add the letter "V" four times to draw the first two arms. Next draw two long "V"s for legs. Below the first set of "V"s draw parallel lines to make a second pair of arms. Make hands by drawing four triangles. Draw two large diamonds for feet.



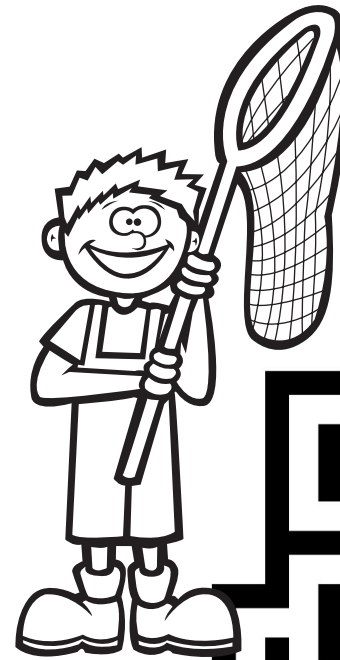
**STEP 4** Finish your ant by drawing small triangles on the hands for fingers. Antennae can be made by drawing parallel lines that are bent and adding triangles and ovals. You can also add things like a mouth, and segments to the arms, legs, feet, and body.



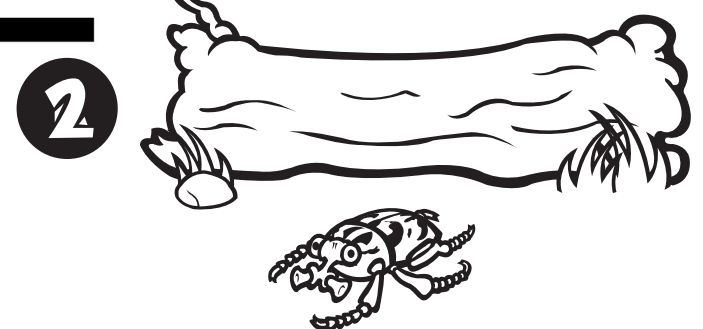
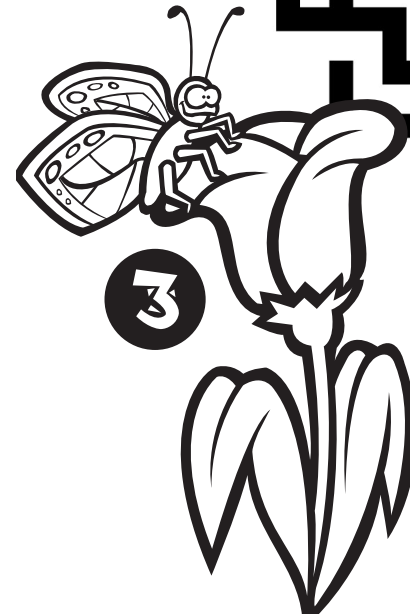
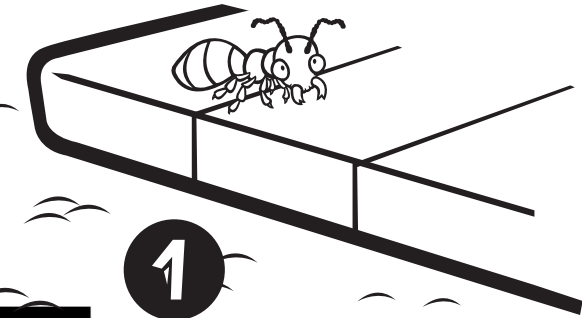
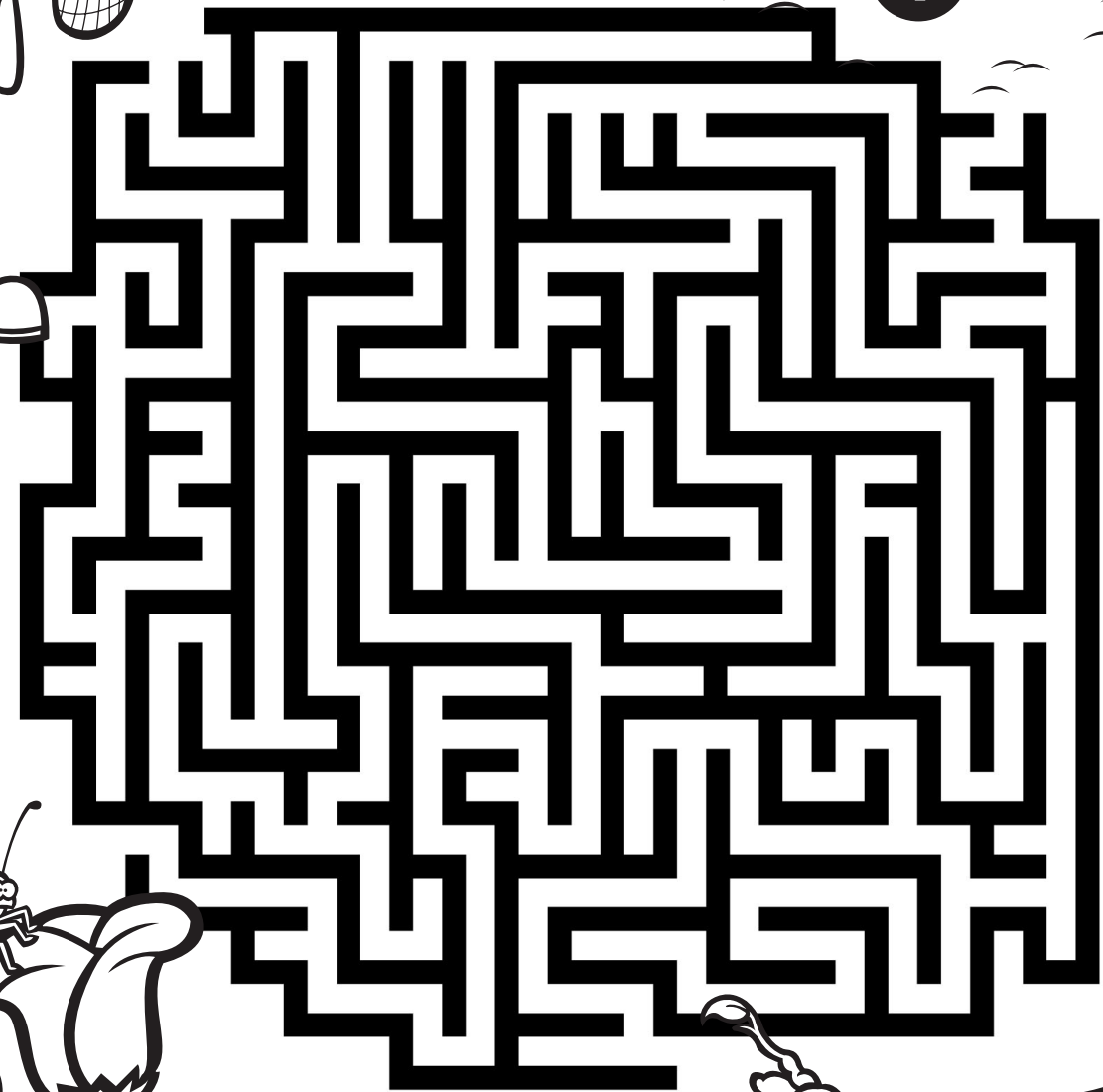
Draw a picture of your insect here.

# Safari Maze Game

The young adventurer to the left is ready for an insect safari. Guide the bug discoverer through the maze to find the ant on the pavement (1), the beetle by the log (2), and the butterfly on the flower (3).



**START**



## GO ON AN INSECT HUNT!



Butterflies and moths have a similar life cycle. The eggs hatch into caterpillars. The caterpillars become pupae, which then turn into butterflies or moths. Clothes moth caterpillars eat woolen clothes. The moths often lay eggs on wool clothes, so when the caterpillar emerges it has something to eat. Because they like to lay their eggs on clothes, you might look for clothes moths inside. Butterflies will usually be found outdoors. The caterpillars feed on leaves and the butterflies feed on nectar.

## DESCRIBE WHAT YOU FOUND

- 1 Where did you find your insect, indoors or outdoors?
- 2 Look closely at the insect's antennae. Moths have thread-like or feathery antennae; butterflies have knobs on the ends of their antennae. What kind of antennae does your insect have?
- 3 How long is your insect?
- 4 What color is it?

# Butterflies, Moths, and Caterpillars

Which picture below looks like the insect you found?

MONARCH BUTTERFLY



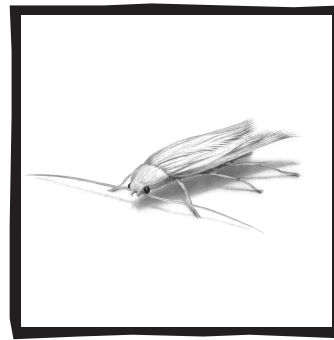
Actual Size

CATERPILLAR



Actual Size

CLOTHES MOTH



Actual Size



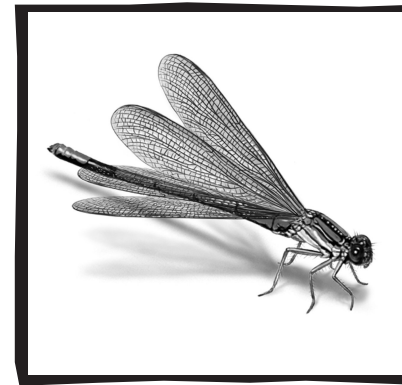
A housefly can only eat liquid food, so it throws up a substance that dissolves solid foods. It's like having a milkshake for every meal!

Draw a picture of your insect here.

# Mystery? Arthropods?

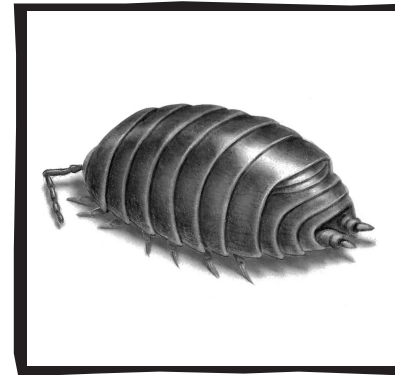
Which picture below looks like the insect you found?

DAMSELFLY



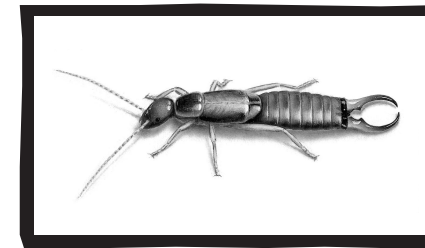
Actual Size

PILLBUG

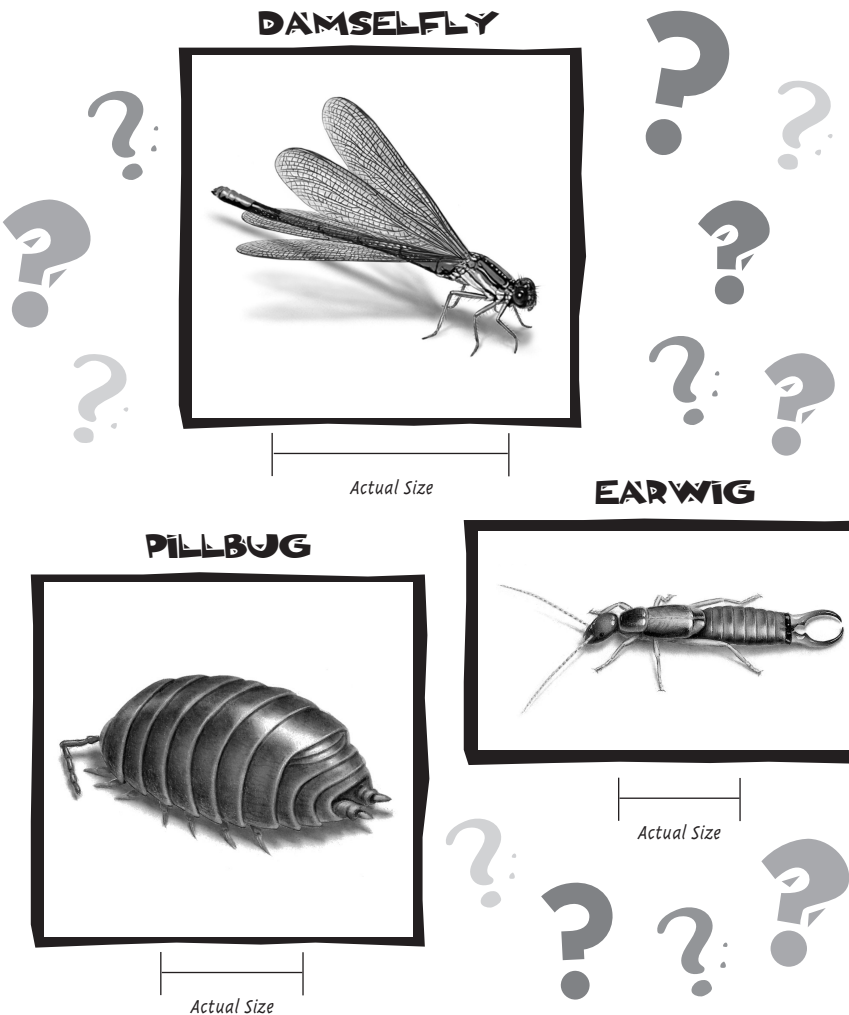


Actual Size

EARWIG



Actual Size



Draw a picture of your insect here.

## GO ON AN INSECT HUNT!



There are many strange and amazing creatures that we have not discussed in this booklet. Go on another adventure to find the most amazing arthropod you can. If you look at night, maybe you will find an earwig in a pavement crack around your house. People used to think that these insects crawled in people's ears at night. If you look near a lake, maybe you will see a damselfly. They often fly in pairs. If you look under a rock where the ground is wet, maybe you will find a pillbug. Pillbugs aren't even insects; they're the only crustacean that can live on land.

## DESCRIBE WHAT YOU FOUND

- 1 What do you think the pincers on the back of the earwig are for?
- 2 How many pairs of wings does a damselfly have?
- 3 What happens when you lightly touch a pillbug?

A cockroach is the fastest thing on six legs, traveling up to five feet per second!

## GO ON AN INSECT HUNT!



Ants are usually found outdoors. Most ants live in large nests that they build in fallen logs, under stones, or in cracks in the pavement. Ants prefer to eat sweet things, and they will often head indoors to find sweets. Be careful! Some kinds of ants (fire ants, for example) can give you painful stings.

## DESCRIBE WHAT YOU FOUND

- 1 Where did you find your ant? The location will help you figure out what kind of ant it is.
- 2 What color is your ant?
- 3 How long is your ant? Carpenter ants are longer than pavement ants and house ants.



Some termites defend their nest by exploding and spraying their enemy with sticky guts.

# Ants

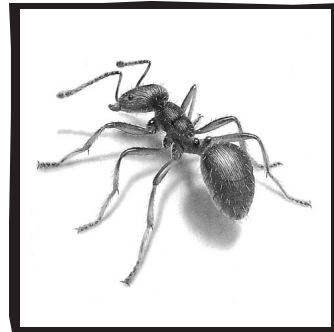
Which picture below looks like the insect you found?

CARPENTER ANT



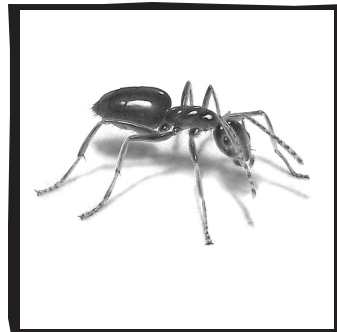
Actual Size

ODOROUS HOUSE ANT



Actual Size

PAVEMENT ANT

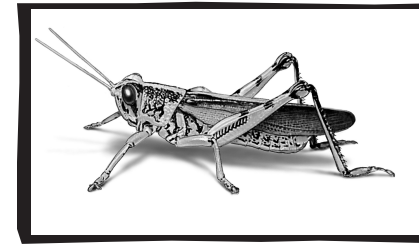


Actual Size

# Grasshoppers and Crickets

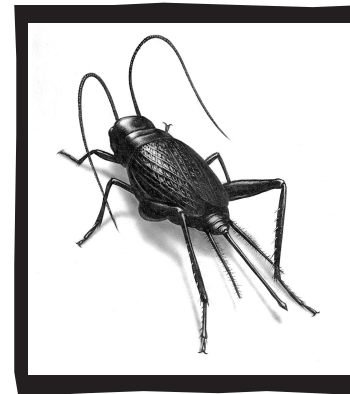
Which picture below looks like the insect you found?

GRASSHOPPER



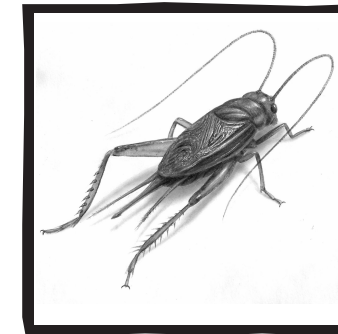
Actual Size

FIELD CRICKET



Actual Size

HOUSE CRICKET



Actual Size

## GO ON AN INSECT HUNT!



You can usually find crickets and grasshoppers outside in the grass of lawns, parks, and meadows. Occasionally, they will come indoors. Crickets make a chirping sound; grasshoppers do not. Both crickets and grasshoppers are very good hoppers. They can jump pretty high and pretty far. Be careful! Some crickets and grasshoppers may pinch you if you try to handle them!

## DESCRIBE WHAT YOU FOUND

- 1 What color is your insect?
- 2 How long is your insect?
- 3 Where did you find it?
- 4 Can you tell if your insect is a cricket or a grasshopper?

Draw a picture of your insect here.



These drum-like membranes are very sensitive to sound vibrations. Crickets have "ears" on their front legs just below their knees.

## GO ON AN INSECT HUNT!



Beetles can be found in many different places. The best place to look is outside. But some beetles like to eat things that you keep around the house, like flour. Some amazing insects are bioluminescent! This means that, like the firefly, they have the ability to make light. Beetles come in all shapes and sizes. Some can fly. Always be careful if you handle beetles—they might pinch.

## DESCRIBE WHAT YOU FOUND

- 1 What color is your beetle?
- 2 What shape is your beetle? Is it rounded or long and thin?
- 3 Does your beetle have any special marks?
- 4 Can your beetle fly?

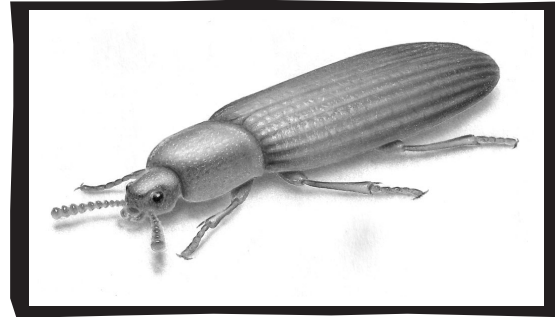


A termite queen can live for 15 years and can lay an egg every three seconds for her entire life.

# Beetles

Which picture below looks like the insect you found?

FLOUR BEETLE



Actual Size

FIREFLY



Actual Size

LADYBUG



Actual Size



# Flies

Which picture below looks like the insect you found?

HOUSE FLY



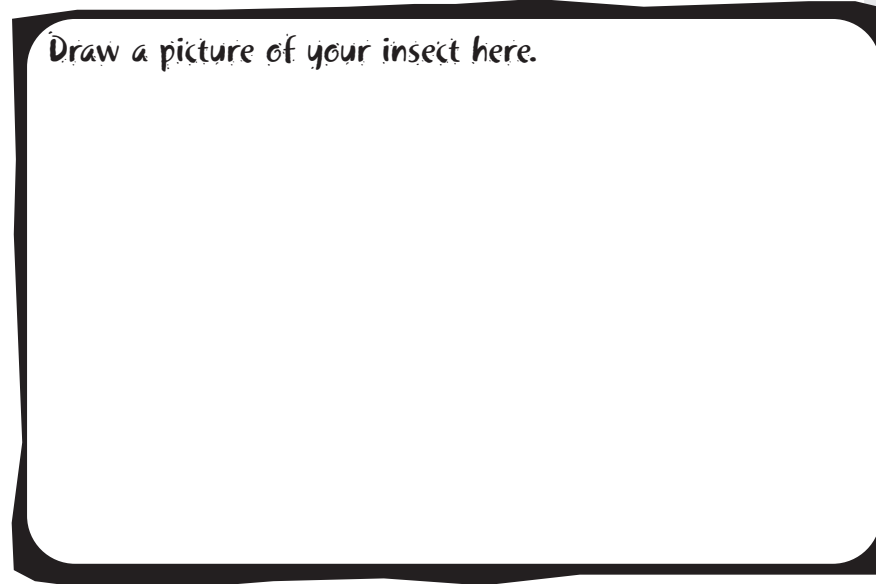
Actual Size

MOSQUITO



Actual Size

Draw a picture of your insect here.



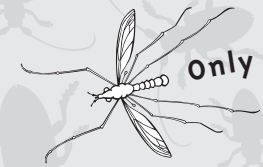
## GO ON AN INSECT HUNT!



Most people are familiar with flies that buzz around food at the dinner table or at picnics. But did you know that mosquitoes are also a type of fly? House flies feed on sweets and garbage in your house, but mosquitoes may feed on you! Female mosquitoes feed on blood from mammals, including humans. Mosquitoes like to live near water and their numbers increase after summer rain.

## DESCRIBE WHAT YOU FOUND

- 1 Where did you observe the insect?
- 2 Does your insect have long legs or short legs?
- 3 What shape is your insect's body? Stocky or thin?



Only female mosquitoes bite. They need a blood meal before they can lay their eggs.